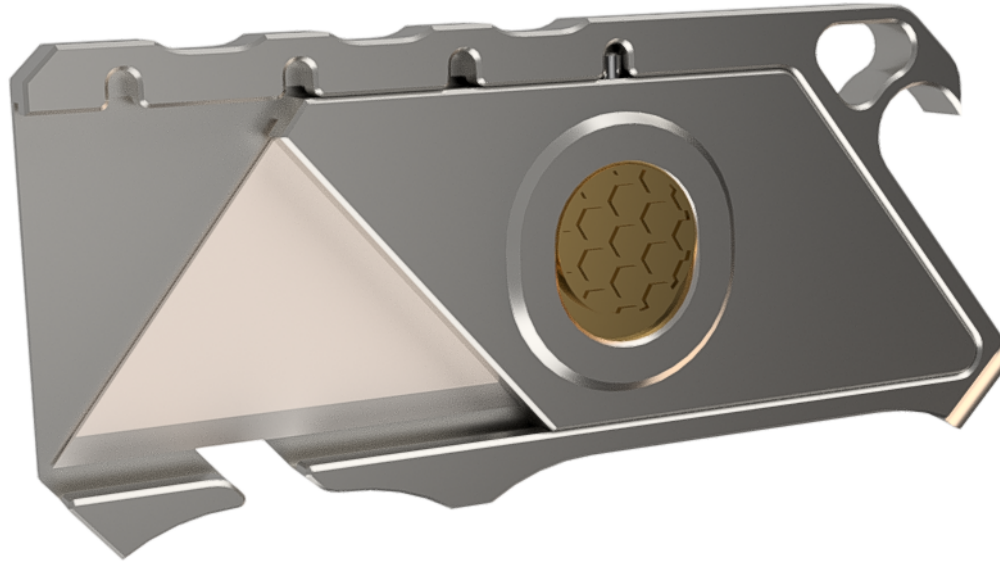


Talon Keychain Utility Knife Care and Use Instructions v1.0



Safety

Talons are designed for light to medium duty applications only. Do not use excessive force and always practice safe cutting techniques. Follow all instructions and warnings when using utility blades. Failure to maintain the knife, the use of incompatible blades, and/or improper use can lead to injury. User assumes all risk and liability.

Compatibility

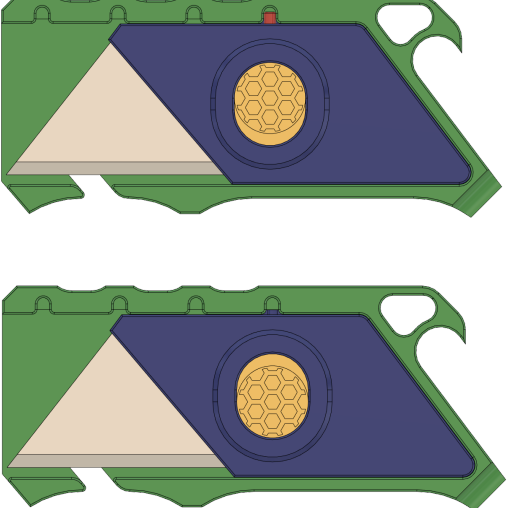
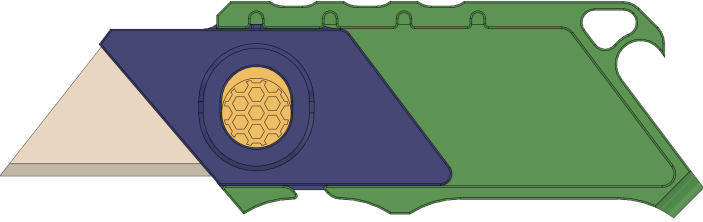
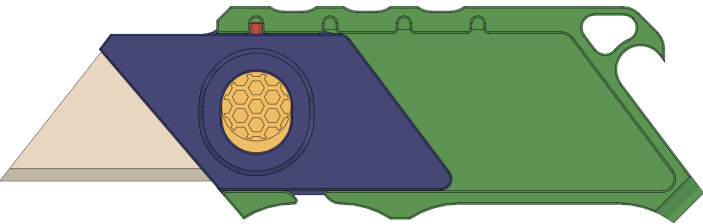
Talons are designed to be used with [Stanley Classic 1992 Utility Blades](#) which can be found on Amazon.com and other retailers. We do not guarantee proper functionality with other brands or types of utility blades. Generally speaking, if a blade fits inside the blade tray with little to no play, the blade tip does not stick out when the knife is closed, and the locking mechanism can fully engage, it can be used with the Talon. Otherwise, it is unsafe to use loose fitting blades.

Other compatible utility blades:

- IRWIN 2084100 Bimetal Blades

Operation

Utility Knife

<p>Slide the button (yellow) down to disengage the pin (red) from the slot (green).</p>	
<p>Slide the blade cartridge forward to one of the three open positions, or all the way out if you mean to disassemble the knife.</p>	
<p>Release the button and allow the pin to snap into the slot. Reverse this process to close the knife.</p>	

Tips:

- Keep your hand off the button while making a cut
- Always remember to fully retract the blade after use
- Only use for light to medium duty cutting such as opening letters and packages or cutting cardboard, string, paper, etc.

Talon Keychain Utility Knife Care and Use Instructions v1.0

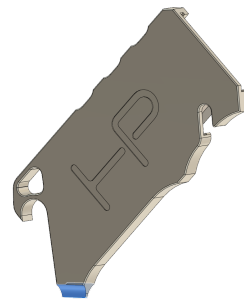
Bottle Opener

With the knife closed, use the hook to pry off bottle caps. Be careful not to catch on the glass because titanium is strong enough to break it!



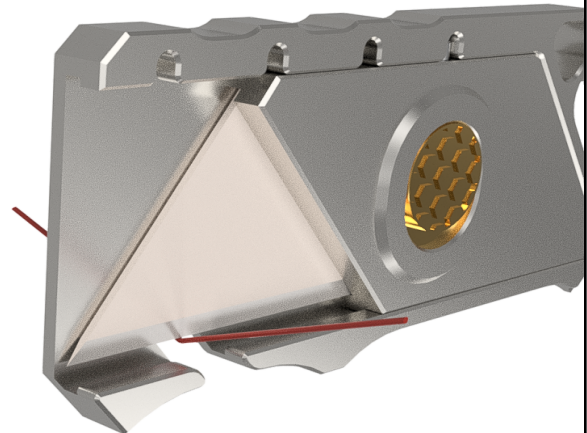
Flat Head

With the knife closed, use the highlighted blue flat as a flat head screwdriver.



String Cutter

Use the small exposed section of the blade to cut string and other thin materials.



Maintenance

Maintaining Your Talon

Using sharp blades decreases the risk of injury because the cutting force needed is less than that of a dull one. Luckily, we've made it easy to flip or swap blades so your knife is always razor sharp. Simply follow the steps outlined in the "Operation" instructions and push the blade cartridge all the way out of the body. Then, you can flip or swap your blade with ease. For best results, use **Stanley Classic 1992 Utility Blades**, keep them clean, and always change them when they are dull, broken, or corroded.

Cleaning Your Talon

Disassemble the knife and wipe out any debris or grime with a paper towel or similar. You can use hot water, dish soap, and a nylon scrubbing brush for a deep clean if needed. We don't recommend using metal brushes or scouring pads because it may scuff the anodize. Allow to completely dry before reassembling.

Lubricating Your Talon

Talons are anodized and teflon impregnated for increased wear resistance and lubricity. This means that as long as they are kept clean, they should not need to be lubricated. However, if you notice shiny tracks wearing through the anodizing and/or a sticky feeling, it may be necessary to clean the knife and then lubricate it with a small amount of copper based anti-seize.